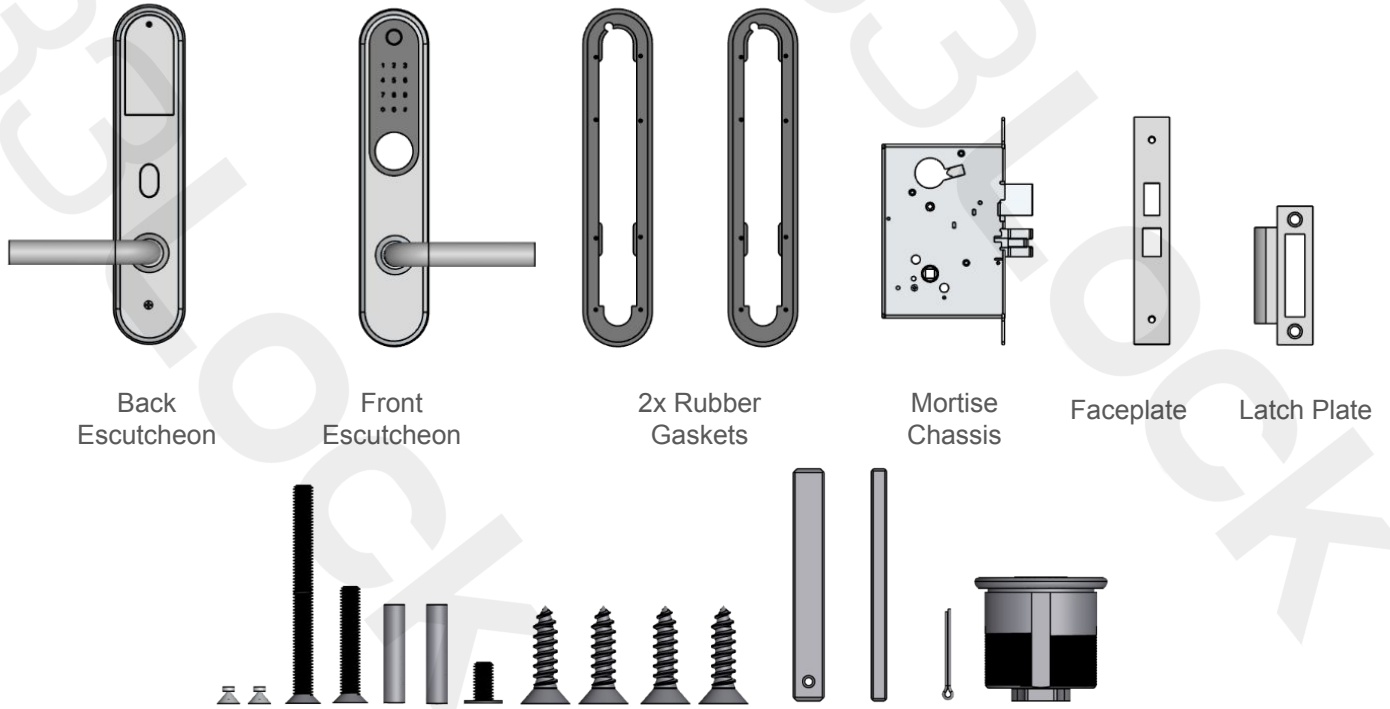


# 33Lock

IntelliMortise

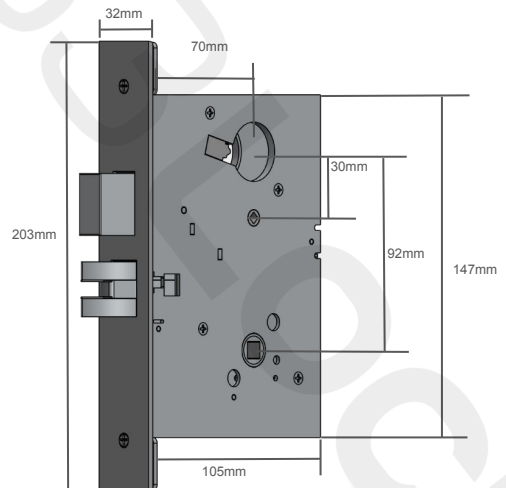
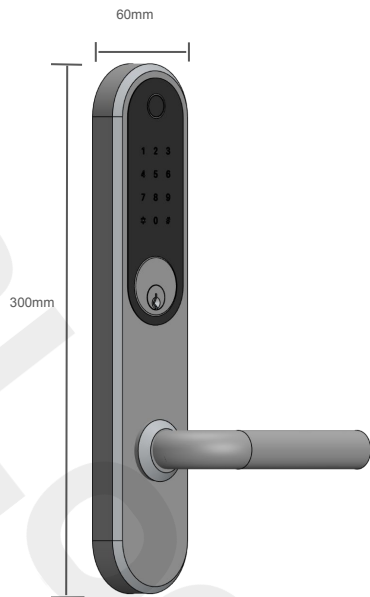


# Specifications



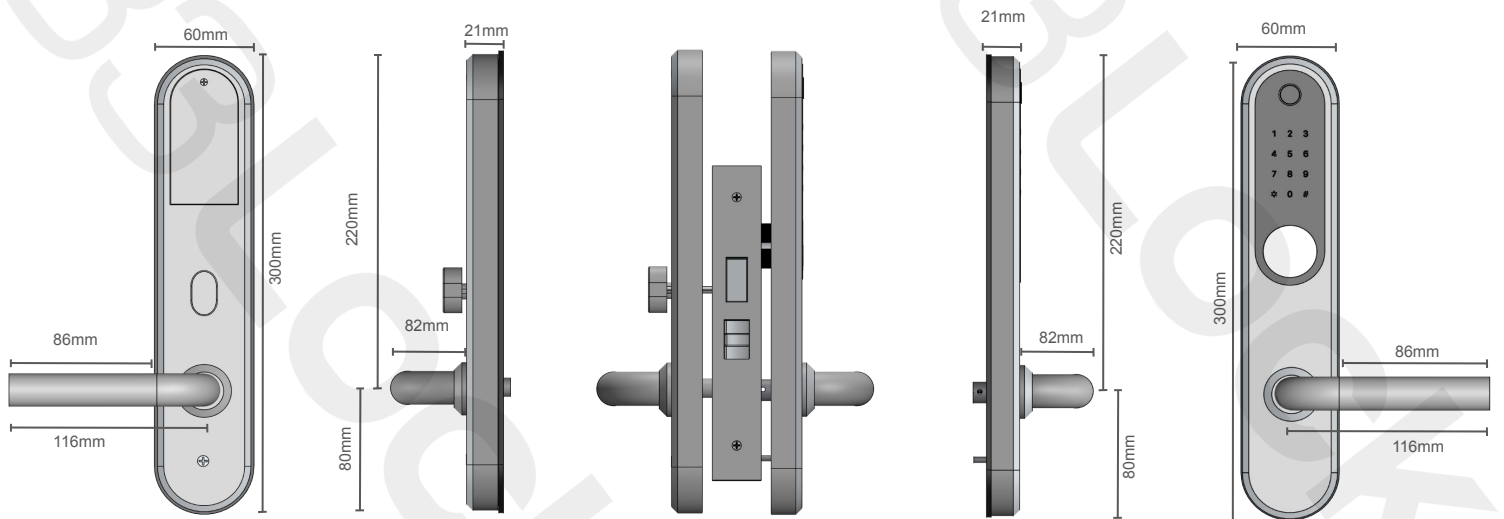
From left to right:

2x 6mm screws, 1x 60mm screw, 1x 30mm screw, 2x 25mm barrel adjusters, 1x 10mm sliding screw, 4x 25mm wood screws, 1x 60mm x 8mm square spindle, 1x 60mm x 4mm square spindle, 1x 30mm cotter pin, 1x 50mm threaded key cylinder  
*Requires 4x AAA batteries - not included*



# Specifications

## Dimensions



## Certifications

UL 10B, UL 10C, NFPA 252 and CAN/ULC S104  
CE, FCC, RoHS, ADA compliance upon request

## Credentials

PIN Code (150), MIFARE 13.56 Mhz (200), Digital Key (300), Fingerprint (200)  
WiFi Open, API Open, Mechanical Key  
App and Cloud management, iOS, Watch OS, Android  
Credentials stored on lock, online and offline operation

## Features

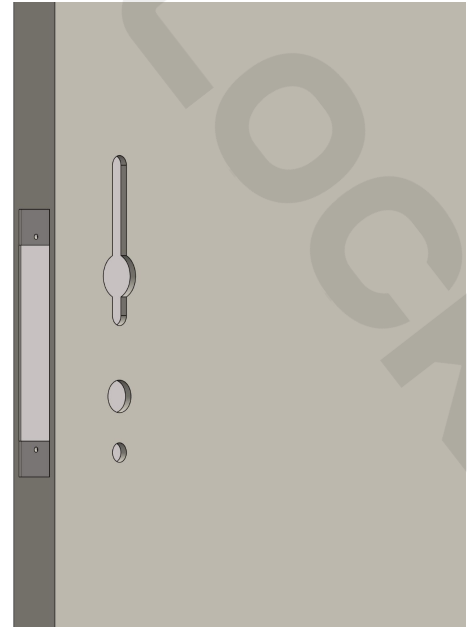
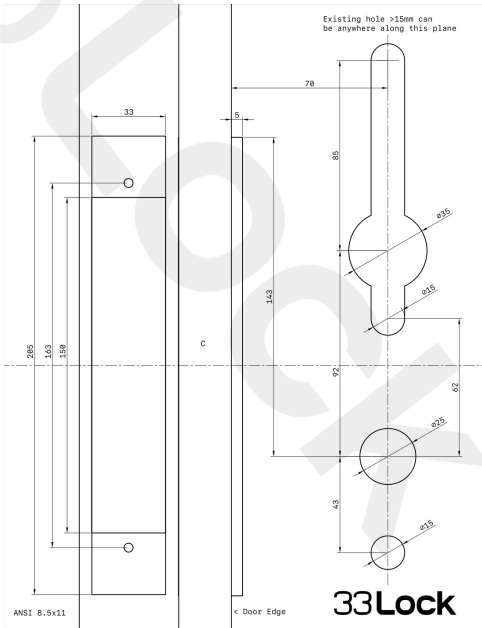
Power: 6V 4x AAA non-rechargeable alkaline batteries, micro USB backup power  
Temperature: -25C to 60C, Humidity: 0% to 95%  
Waterproof: IP55, 200 hour salt spray  
Finishes: brushed silver, satin black  
Interface: push button, touchscreen  
Levers: tubular straight, tubular return

## Mechanical

Materials: body - 304 stainless steel, interface - plastic ABS  
Chassis: UL listed ANSI Mortise, field reversible  
Key cylinder: interchangeable, 35mm and 45mm, keyed different  
Door characteristics: 35mm to 65mm thickness, 70mm backset

# Door Preparation

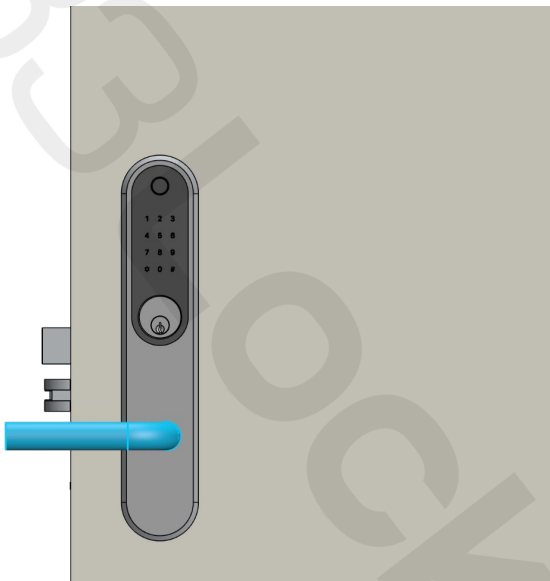
Pdf door templates are available on our website and can be downloaded and printed on standard 8.5"x11" paper



**IMPORTANT:** Confirm that scale is correct before proceeding with cutting door

Before proceeding, confirm that handles are facing away from the door frame. If they are not, follow the handing instructions on the next two following pages

WRONG



CORRECT



# Handing Instructions

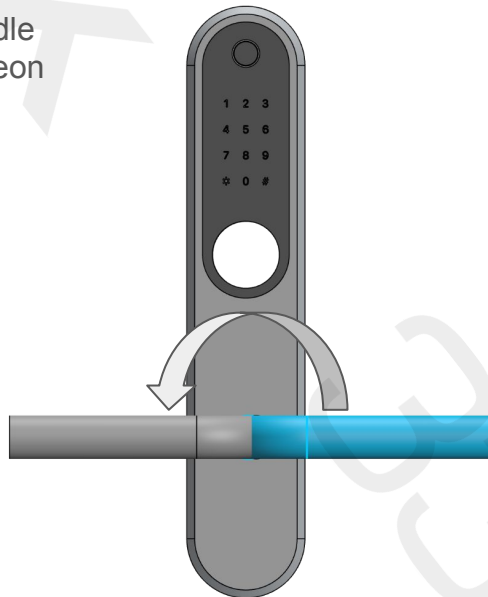
**NOTE:** These steps are only required if the handle is facing the wrong direction on the door.



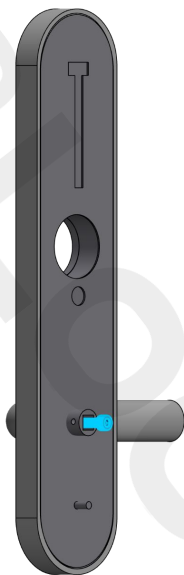
1) Remove screw from the handle through the back of the escutcheon using a #4 hex



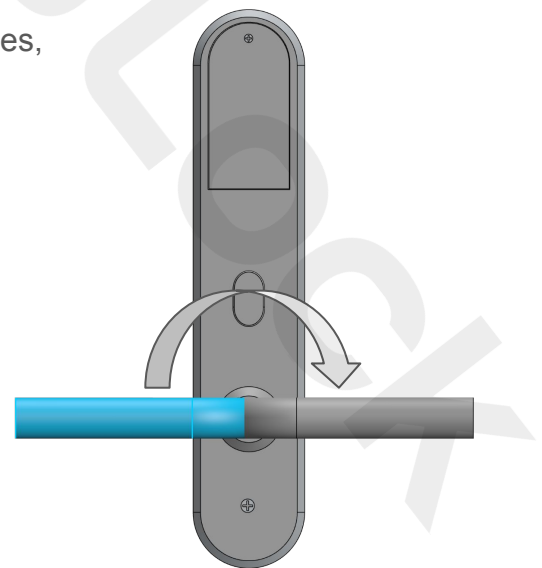
2) Pull off the handle



3) Rotate handle 180 degrees, then replace



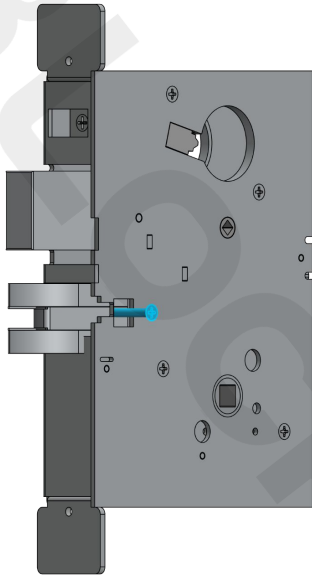
4) Replace the screw back into the handle



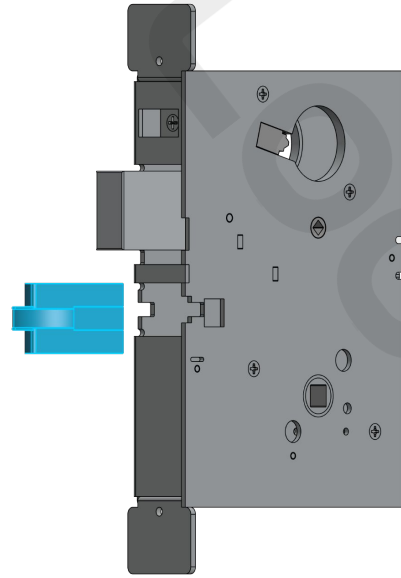
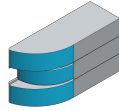
5) Repeat the process for the back escutcheon

## Handing Instructions Cont.

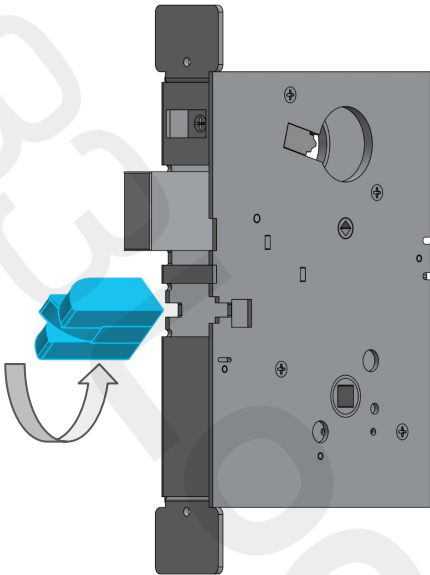
**NOTE:** The rounded side of the latch must face toward the front escutcheon, or secure side of the door.



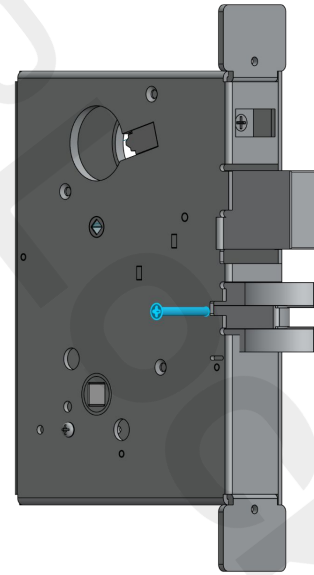
6) Use a phillips head to remove the screw connecting to the latch



7) Remove the latch from the mortise chassis by pulling straight out



8) Rotate the latch 180 degrees, then reinsert back in to mortise chassis

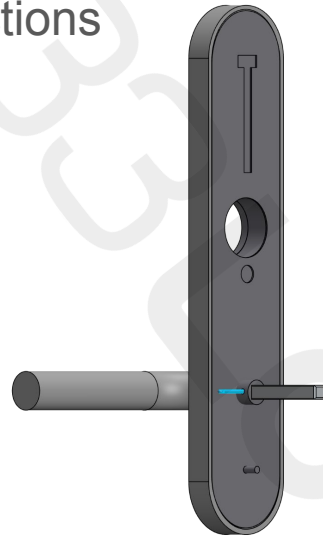


9) Insert the screw into the opposite side of the mortise chassis into the the latch

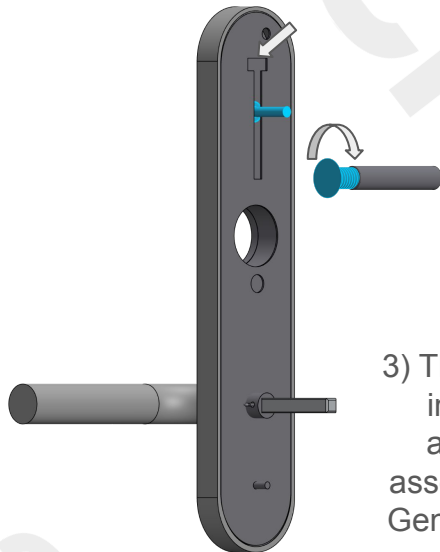
# Installation Instructions



1) Insert the larger 8mm square spindle in to handle



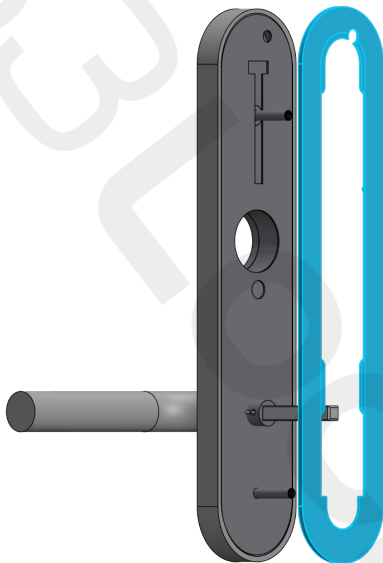
2) Secure using the cotter pin



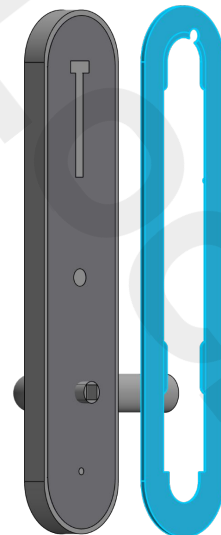
3) Thread the sliding screw into one of the barrel adjusters. Then slide assembly down the T-slot. Gently tighten with a small wrench



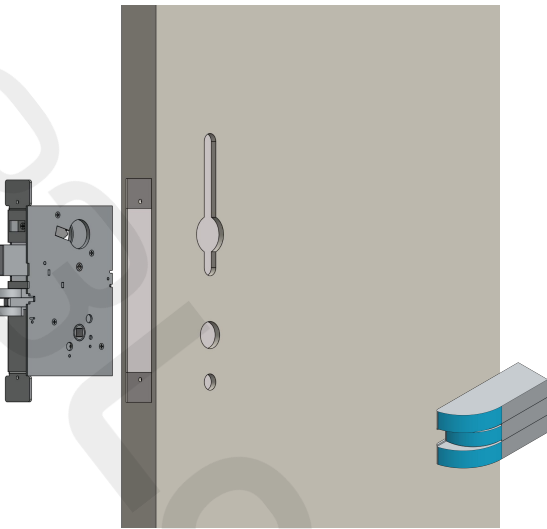
4) Thread the other barrel adjuster on to the bottom post



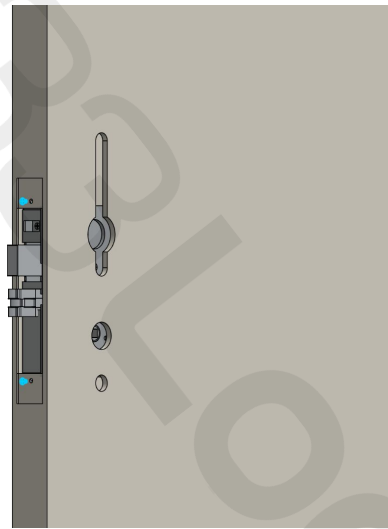
5) Attach the rubber gasket



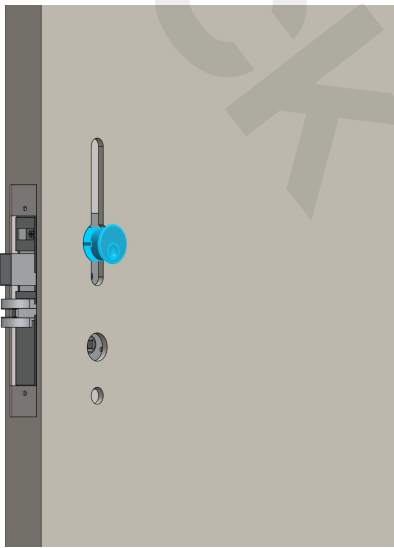
6) Attach the other rubber gasket to the back escutcheon



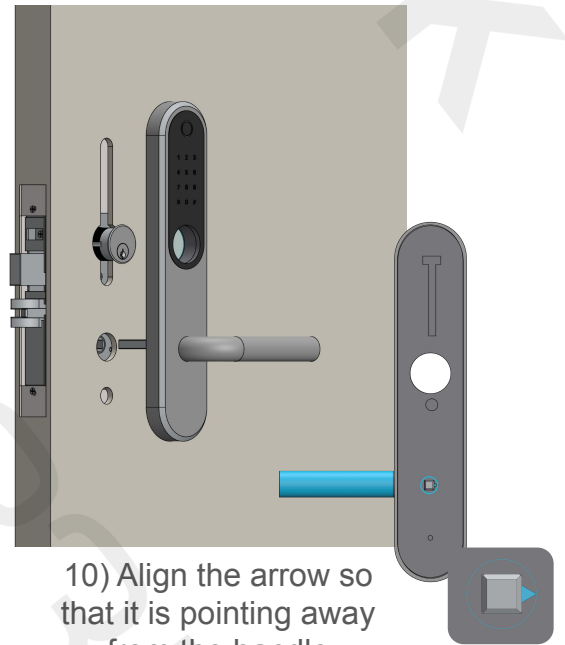
7) Insert mortise chassis into the door. Make sure the rounded side of the latch is facing toward the front escutcheon



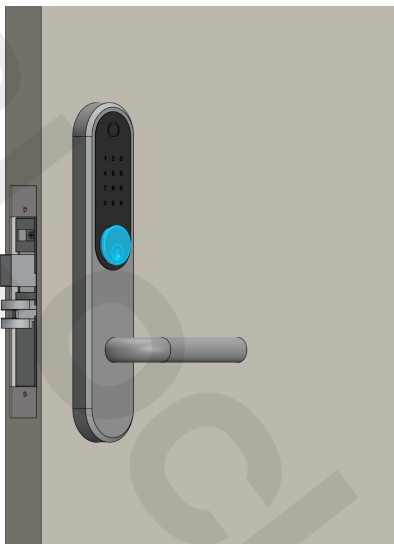
8) Fasten the mortise chassis using two of the provided wood screws



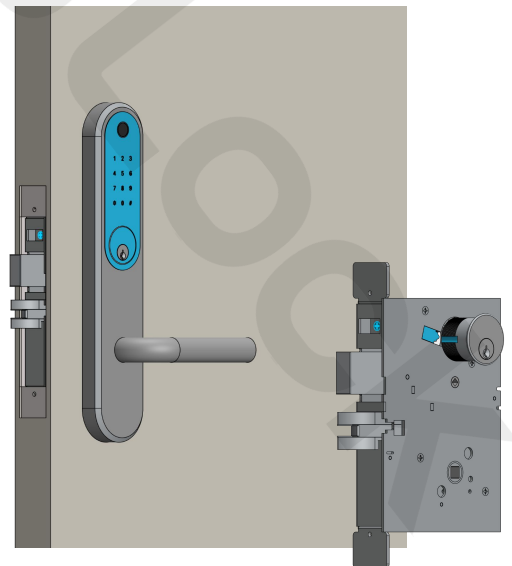
9) Thread the key cylinder into the mortise chassis



10) Align the arrow so that it is pointing away from the handle



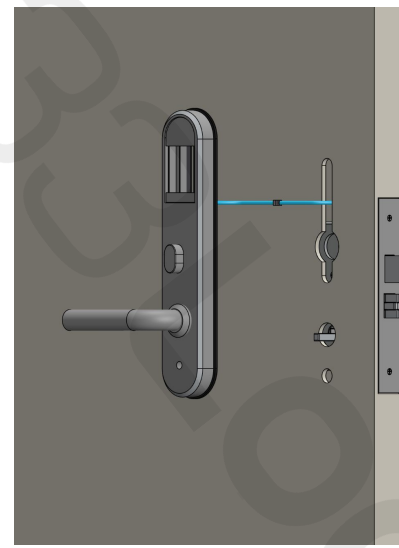
11) Line up the escutcheon and door. Thread key cylinder until flush



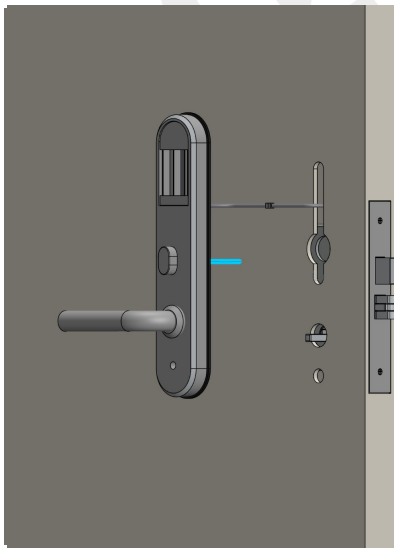
12) Once flush, tighten screw on chassis to lock in the key cylinder



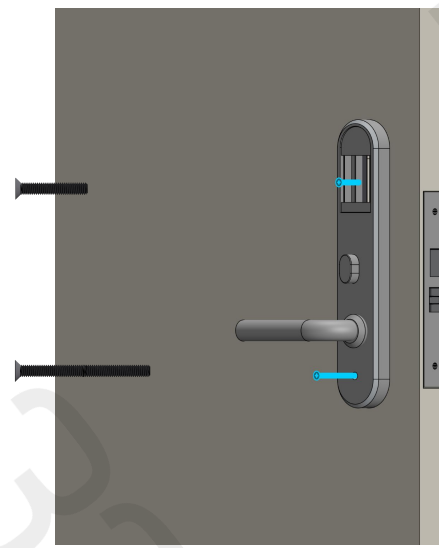
13) Slide the faceplate over the bolt and latch and secure with the small 6mm screws



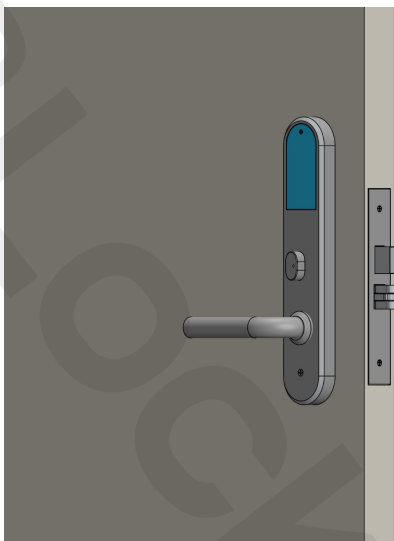
14) Connect the cables of the front and back escutcheons, and stuff excess cable into the door



15) Insert the small spindle into the back of the thumbturn and line up with handle spindle



16) Thread the 30mm screw through the battery case into the other end of the barrel adjuster. Then, thread the 60mm screw through the bottom



17) Replace the battery cover

**NOTE:** *If installed correctly:*

1. Turning the thumbturn **will** engage the deadbolt.
2. Inserting a metal key **will** engage the deadbolt.
3. Pulling the back handle **will** open the latch and retract the deadbolt.
4. Pulling the front handle **will not** open the latch or retract the deadbolt without a valid credential.
5. Pulling the front handle **will** open the latch and retract the deadbolt with a valid credential.

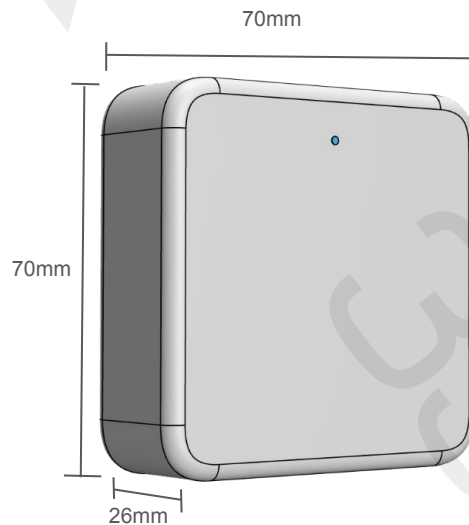
# IntelliHub Gateway

**IMPORTANT:** IntelliHub gateways are only required if **online** capabilities are desired. They are not required to operate an **offline** system.

The IntelliHub is available in two versions: **ethernet** and **wifi**. Please select the appropriate setup for your property based on the building's network infrastructure. In many cases, a combination of both ethernet and wifi versions ensures optimal flexibility and coverage. We recommend consulting with a 33 Lock representative for expert advice prior to installation.

The gateways establish a mesh network with the locks, enabling a **many-to-many** connection. If enhanced performance or extended coverage is needed, additional gateways can be added at any point in time.

Gateways can be installed in either the **common areas** (hallways) or inside **suites**, or a **combination** of the two. If installing in rooms, it is recommended to install 1 gateway per 1 lock (1:1). If installing in hallways, a higher ratio can likely be achieved such as a 2:1 or 3:1.



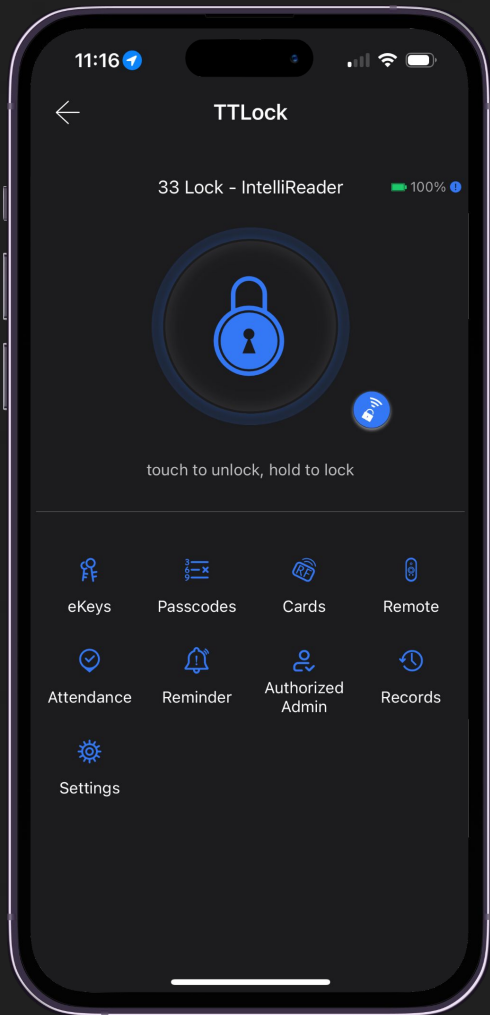
## Ethernet Version

Power - USB-C or PoE  
Power input - 5V/500mA  
Network interface - RJ45  
IEEE standard - 802.3  
Communication protocol - Bluetooth low (BLE)  
Communication range - Maximum 10m line of sight  
Locks to gateways ratio - Many-to-many

## Wifi Version

Power - USB-C  
Power input - 5V/500mA  
Network interface - WIFI 2.4 ghz only  
IEEE standard - 802.11 b/g/n  
Communication protocol - Bluetooth (BLE)  
Communication range - Maximum 10m line of sight  
Locks to gateways ratio - Many-to-many

# TTLOCK + 33Lock



TTLOCK software seamlessly integrates with your 33 Locks, representing the epitome of modern access control. Experience a harmonious blend of cutting-edge technology and unparalleled convenience, empowering you with complete control over your day-to-day operations. Unlock a new era of access management with TTLOCK and 33 Lock.

**IMPORTANT:** *To enable many of the functionalities of your 33 Locks, they need to be configured on the TTLOCK platform. Simply download the complimentary TTLOCK app and follow the provided instructions below to connect them.*

### DOWNLOAD THE FREE TTLOCK APP

Available on both the App Store and Google Play



Once you have downloaded the app, sign up for a free account if you don't already have one.

**NOTE:** *If you are an installer and already have an existing account, it is okay to set the locks up on your account, and then transfer ownership of the locks at a later time. Instructions for how to do this can be found below.*

## Connecting Locks:

Before adding locks through the app, ensure the lock is securely installed on the door, and the batteries are inserted. It is recommended to connect one lock at a time.

### To connect a lock:

1. Open the TT Lock app.
2. Tap the ⊕ in the middle to add the first lock.
3. Select 'Door Lock'.
4. Tap any key on the lock to activate pairing mode.
5. Tap 'Next' to scan and display nearby locks.
6. Select the lock you want to add by pressing '+'.
7. Assign a name to the lock and press 'OK'.
8. Tap lock 'Settings', set Remote Unlock to 'On'.
9. In the same 'Settings' menu, tap 'Firmware Update,' and then tap 'Check for Update' and update to the latest version.

### To connect additional locks:

1. Tap ≡ in the top left corner to open the slide out
2. Tap '+ Add Lock'.
3. Repeat steps 3 through 9 above.

## Connecting Gateways:

Before proceeding, please ensure the following:

- If you are using the wifi version of the gateway, your network needs to support a 2.4GHz frequency for proper connection.
- If you are using the ethernet version of the gateway, be sure to configure your firewall settings to permit the device to establish a connection to your network.
- It is recommended to have a dedicated SSID for your devices to enhance security and performance.
- For optimal connectivity, the gateway should be located within 6 meters (20 feet) of the lock and preferably in direct line-of-sight.
- It's recommended to set up one gateway at a time and ensure that locks are added before configuring the gateways.

### To connect a gateway:

1. Connect the gateway to a power supply (USB or PoE).
2. Tap on the **≡** menu.
3. Tap 'Gateway'.
4. Select the gateway type → G2 for WiFi or G3 for PoE.
5. Once the gateway LED is flashing red and green, tap 'Next'.
6. App will scan and show all nearby gateways.
7. Select the gateway to onboard by pressing '+'.  
8. Enter WiFi name and password, if applicable.
9. Assign a name to the gateway and tap 'OK'
10. Once the gateway is added, go to the **≡** menu.
11. Locate the gateway and confirm it is online.
12. Tap 'Nearby Locks' to view the connected devices and relative signal strengths.

## Testing:

A many-to-many relationship exists between locks and gateways, effectively creating a mesh network of interconnected devices. This means that you can associate multiple locks with a single gateway, and conversely, multiple gateways can be associated with a single lock.

### Determine connection strength:

1. Tap on the ☰ menu.
2. Tap 'Gateway'.
3. Select a gateway .
4. Tap 'Nearby Locks'.
5. Evaluate the signal strengths of each connected lock, and consider a signal strength rated as 'medium' or higher as acceptable.
6. Repeat this procedure for each gateway in the list, ensuring that every lock maintains a minimum of a 'medium' connection to at least one gateway.

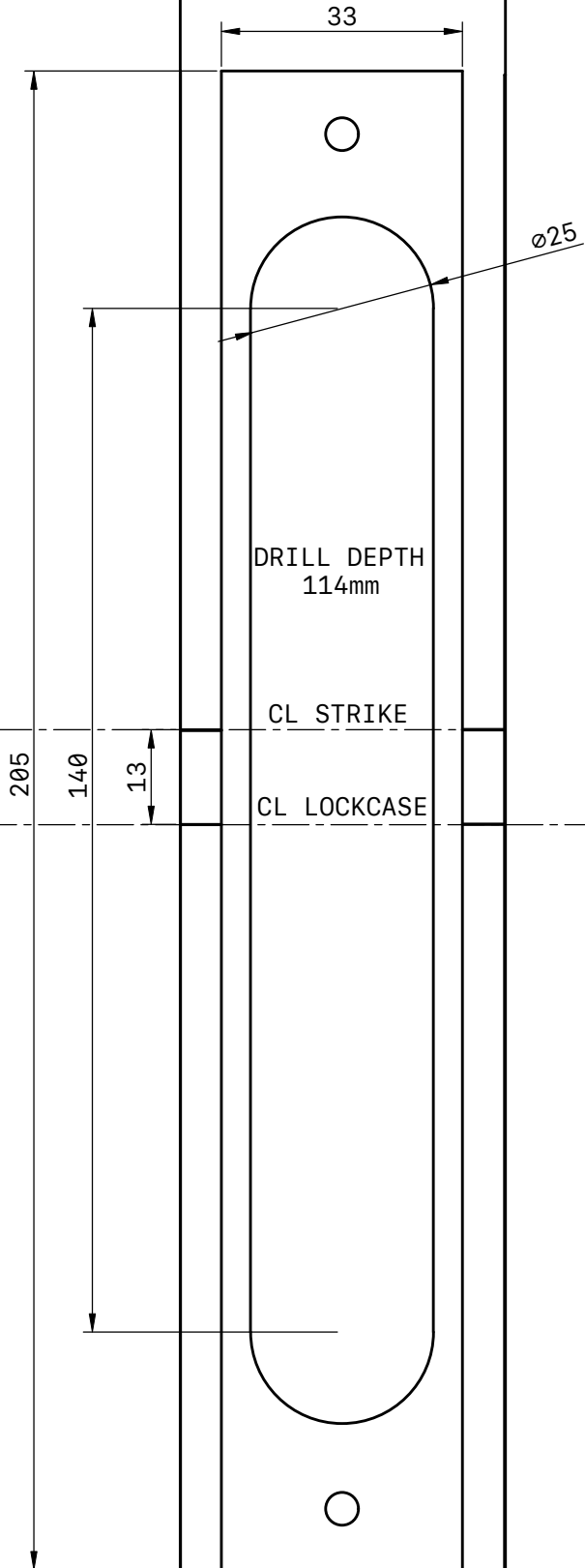
In cases where certain locks fall short of the requirement for at least one 'medium' connection, consider relocating the nearest gateway to a more favorable position. Alternatively, you can introduce an additional gateway closer to the affected locks to enhance the connection strength.

### Transferring Locks and Gateways:

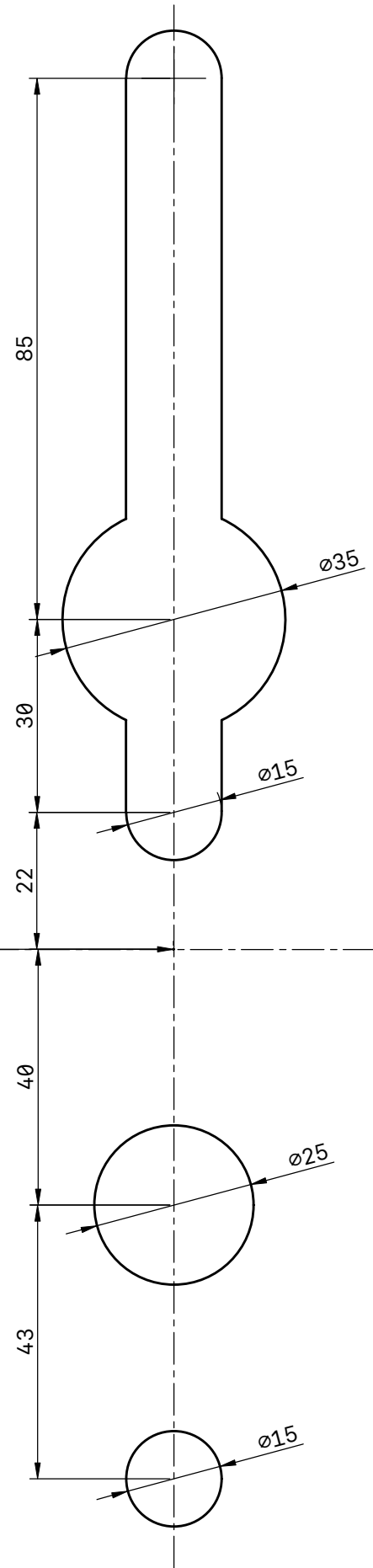
If you are an installer and are looking to transfer ownership of the locks and gateways to a client, follow these steps below:

1. Tap on the ☰ menu.
2. Tap on 'Settings'
3. Tap 'Transfer Lock(s)'
4. Select the locks you want to transfer, then tap 'Next'.
5. Enter in the email of phone number of the recipient.
6. To transfer gateways, repeat steps 1 & 2, then tap 'Transfer Gateway', and follow similar steps to transferring locks.

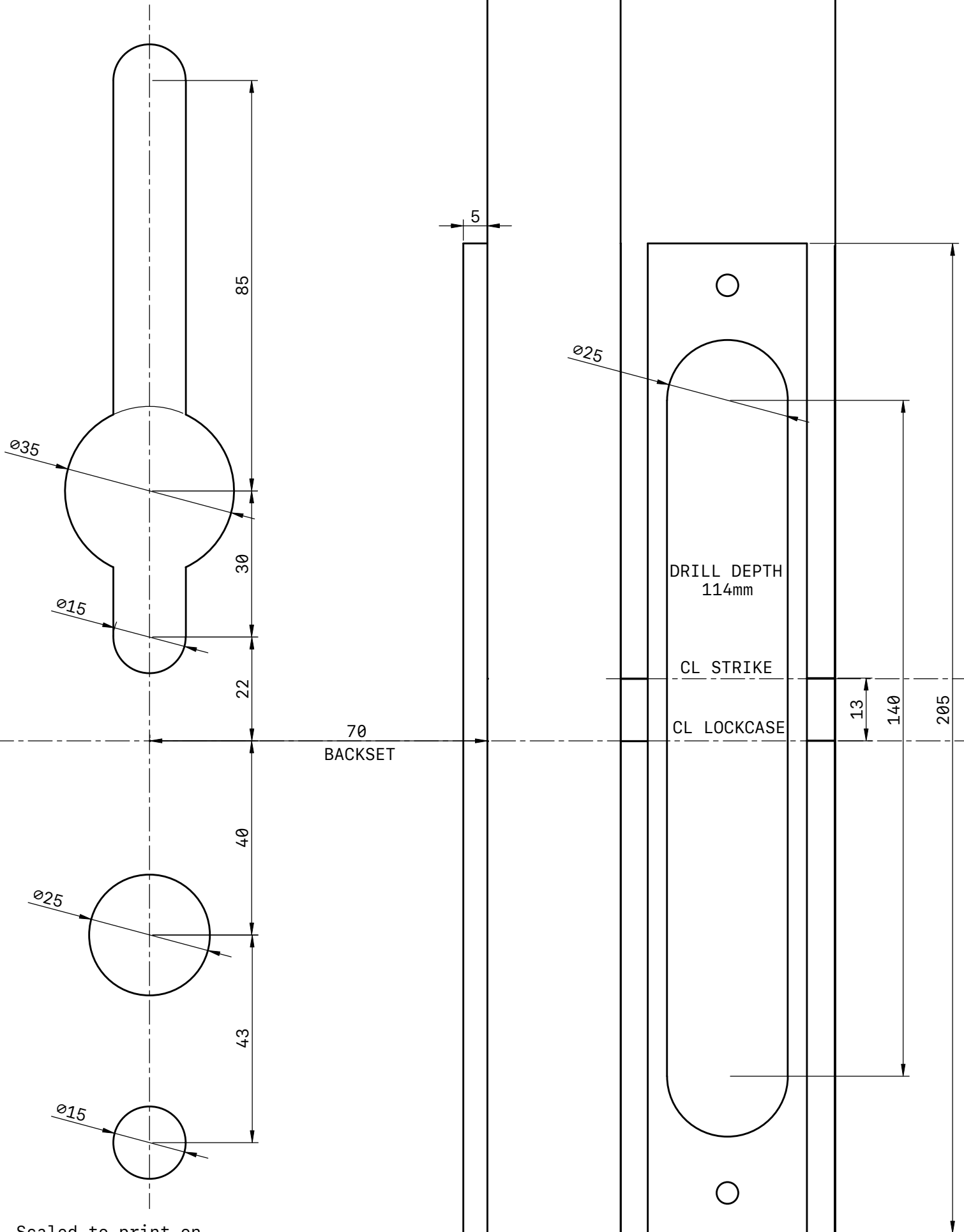
< Door Edge



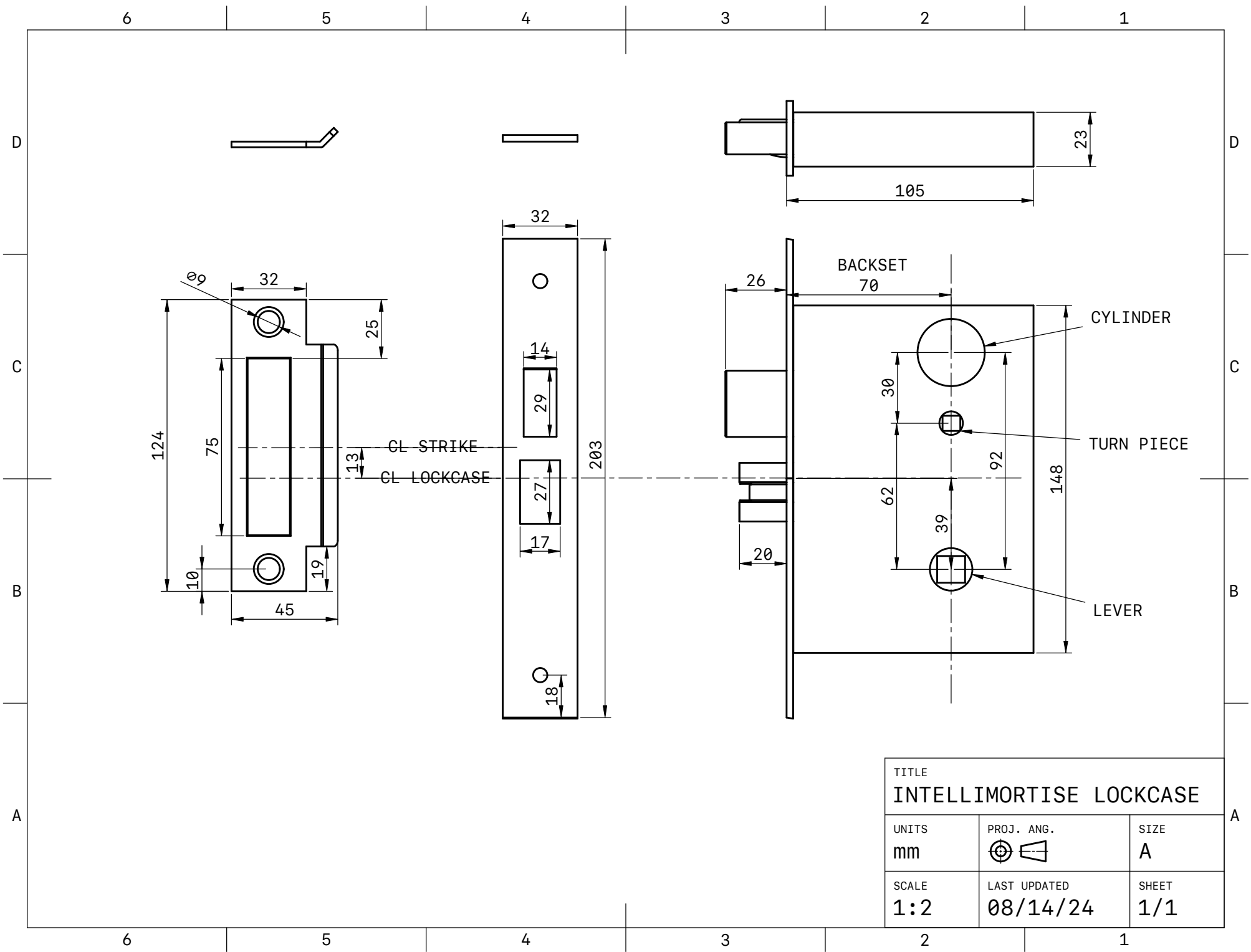
70  
BACKSET



Scaled to print on  
8.5" x 11" paper



Scaled to print on 8.5" x 11" paper



|                         |              |       |
|-------------------------|--------------|-------|
| TITLE                   |              |       |
| INTELLIMORTISE LOCKCASE |              |       |
| UNITS                   | PROJ. ANG.   | SIZE  |
| mm                      |              | A     |
| SCALE                   | LAST UPDATED | SHEET |
| 1:2                     | 08/14/24     | 1/1   |