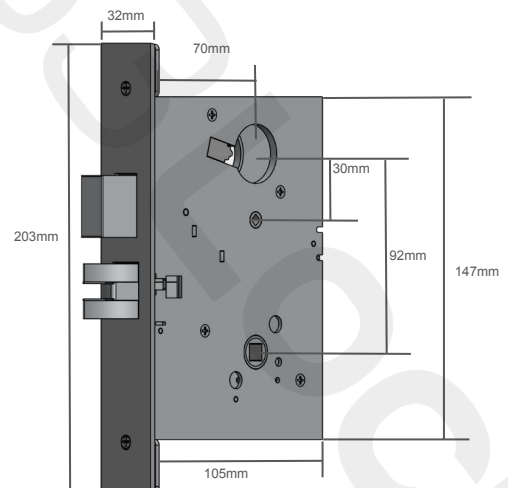
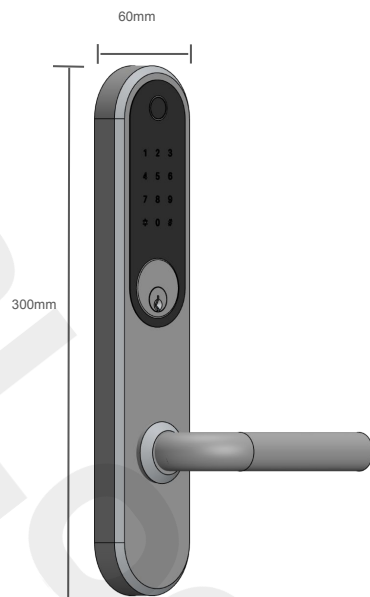
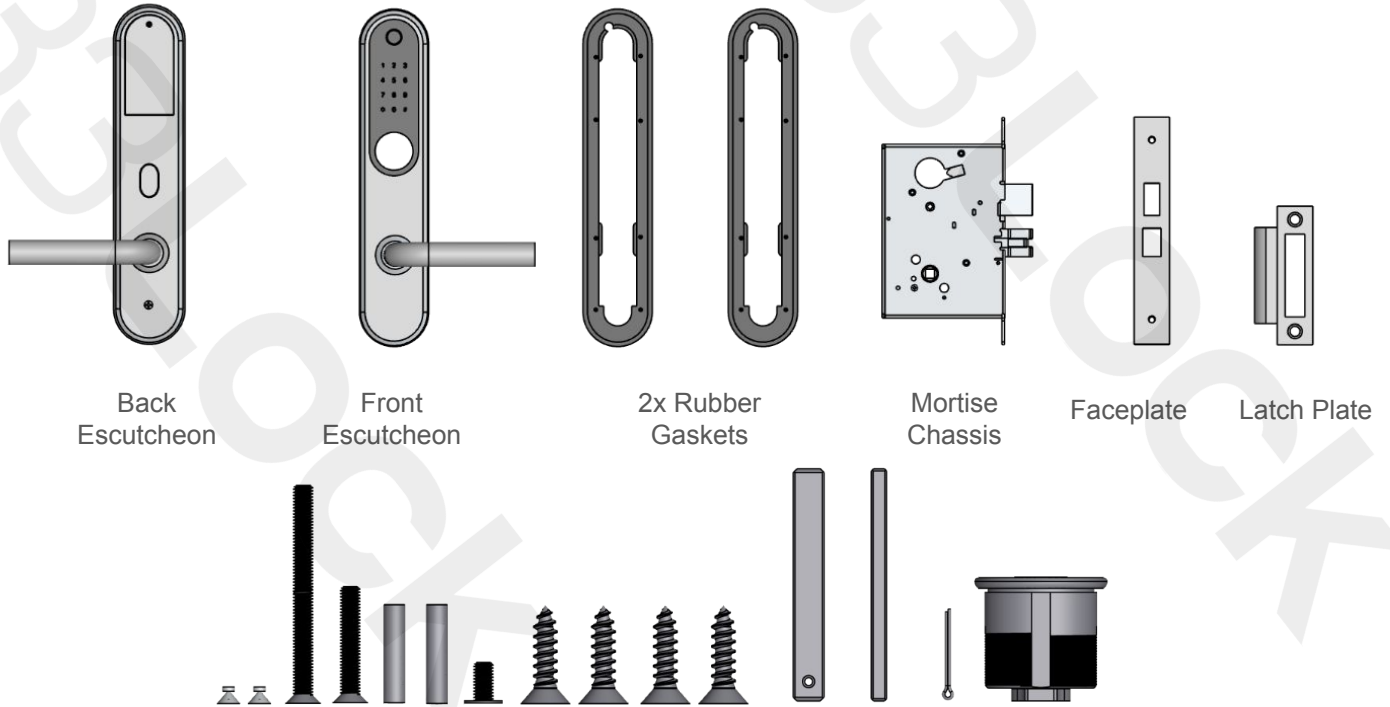


33Lock

IntelliMortise

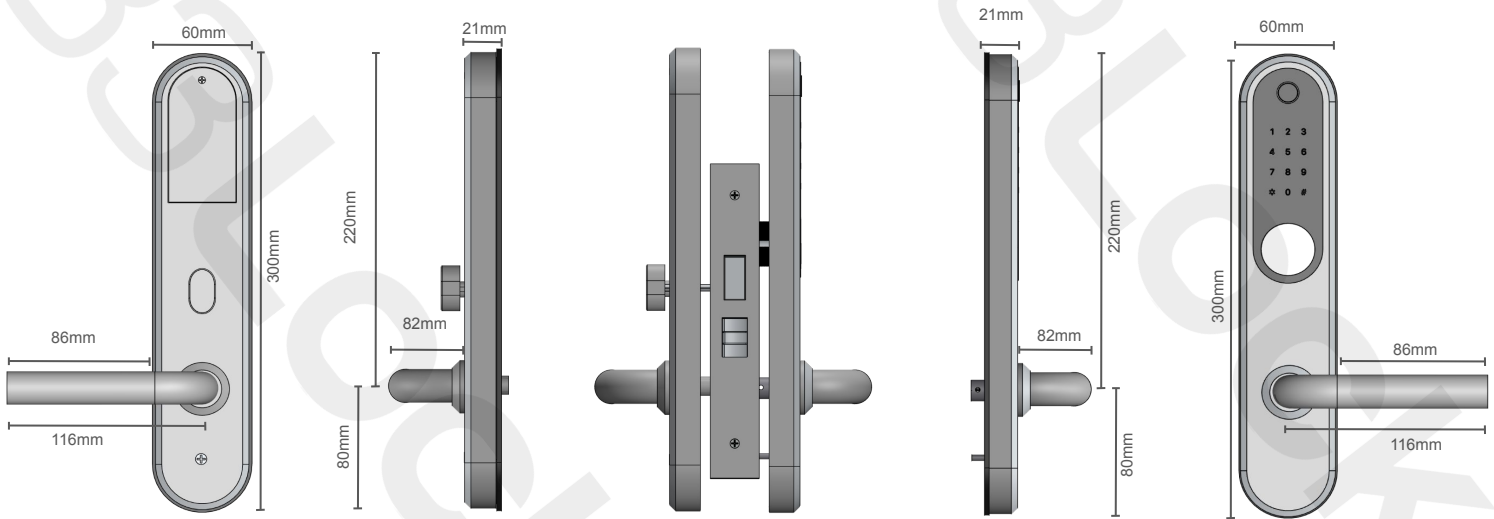


Specifications



Specifications

Dimensions



Certifications

UL 10B, UL 10C, NFPA 252 and CAN/ULC S104
CE, FCC, RoHS, ADA compliance upon request

Credentials

PIN Code (150), MIFARE 13.56 Mhz (200), Digital Key (300), Fingerprint (200)
WiFi Open, API Open, Mechanical Key
App and Cloud management, iOS, Watch OS, Android
Credentials stored on lock, online and offline operation

Features

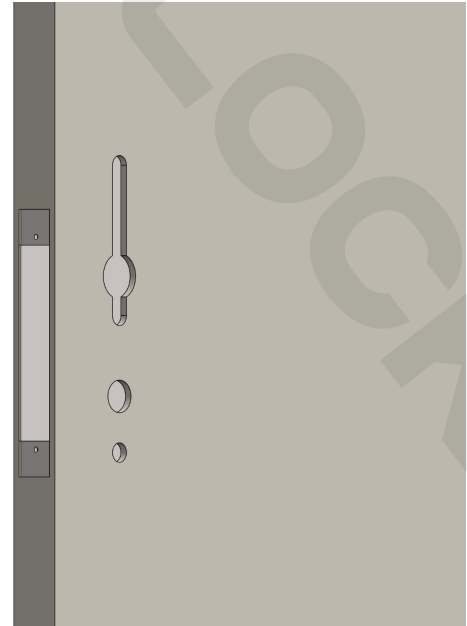
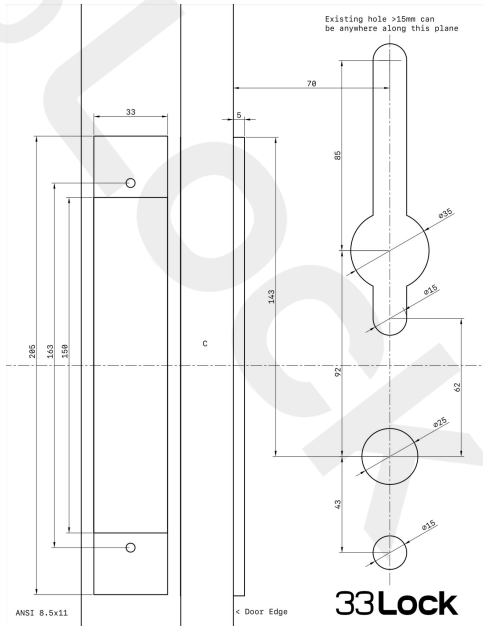
Power: 6V 4x AAA non-rechargeable alkaline batteries, micro USB backup power
Temperature: -25C to 60C, Humidity: 0% to 95%
Waterproof: IP55, 200 hour salt spray
Finishes: brushed silver, satin black
Interface: push button, touchscreen
Levers: tubular straight, tubular return

Mechanical

Materials: body - 304 stainless steel, interface - plastic ABS
Chassis: UL listed ANSI Mortise, field reversible
Key cylinder: interchangeable, 35mm and 45mm, keyed different
Door characteristics: 35mm to 65mm thickness, 70mm backset

Door Preparation

Pdf door templates are available on our website and can be downloaded and printed on standard 8.5"x11" paper



IMPORTANT: Confirm that scale is correct before proceeding with cutting door

Before proceeding, confirm that handles are facing away from the door frame. If they are not, follow the handing instructions on the next two following pages

WRONG



CORRECT



Handing Instructions

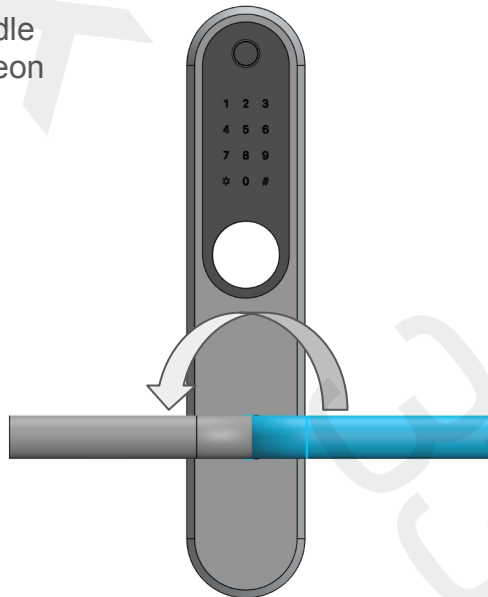
NOTE: These steps are only required if the handle is facing the wrong direction on the door.



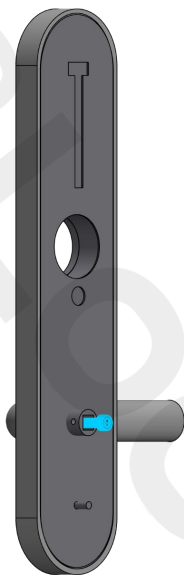
1) Remove screw from the handle through the back of the escutcheon using a #4 hex



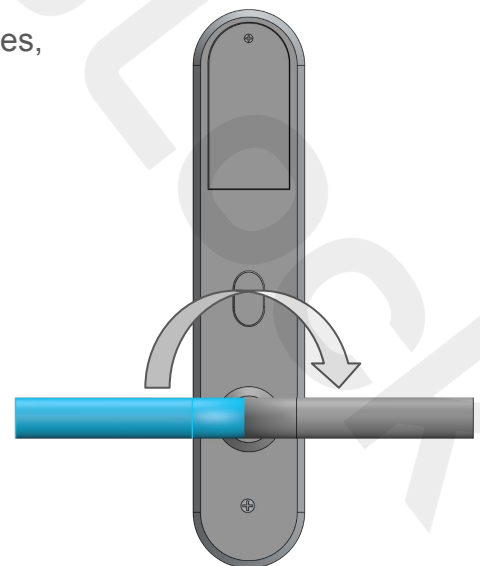
2) Pull off the handle



3) Rotate handle 180 degrees, then replace



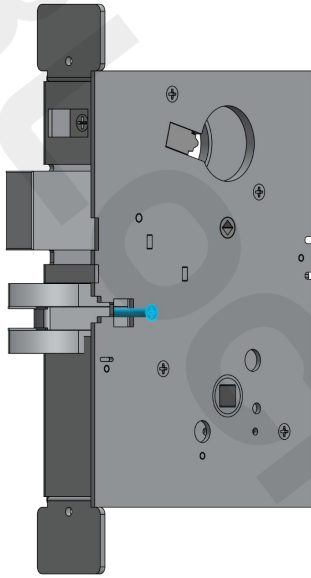
4) Replace the screw back into the handle



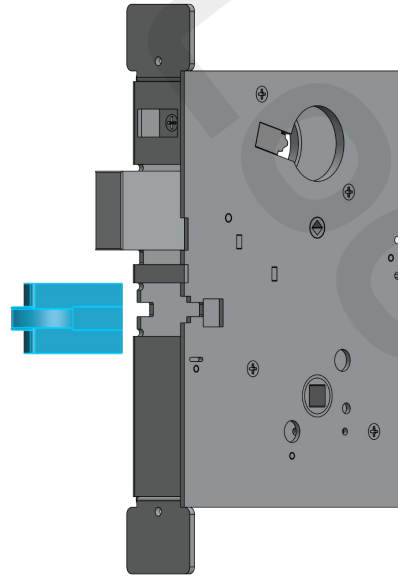
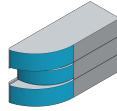
5) Repeat the process for the back escutcheon

Handing Instructions Cont.

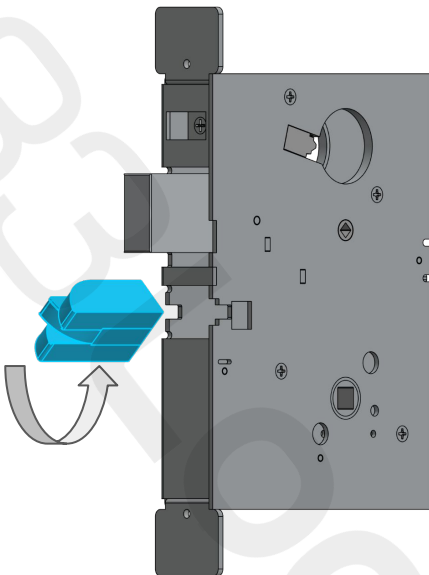
NOTE: The rounded side of the latch must face toward the front escutcheon, or secure side of the door.



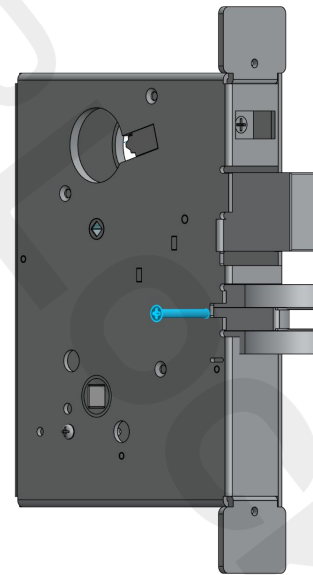
6) Use a phillips head to remove the screw connecting to the latch



7) Remove the latch from the mortise chassis by pulling straight out



8) Rotate the latch 180 degrees, then reinsert back in to mortise chassis

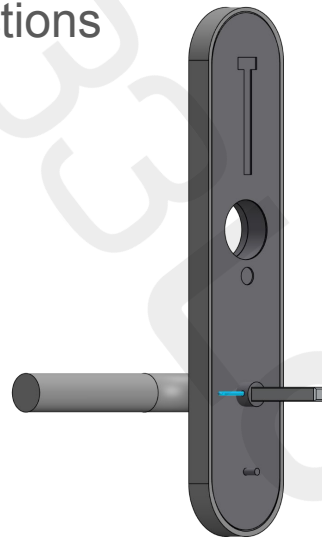


9) Insert the screw into the opposite side of the mortise chassis into the the latch

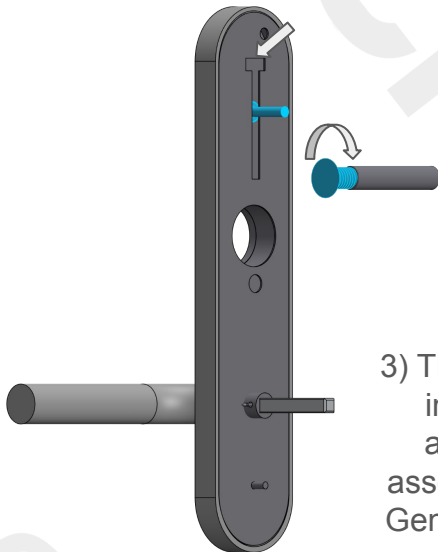
Installation Instructions



1) Insert the larger 8mm square spindle in to handle



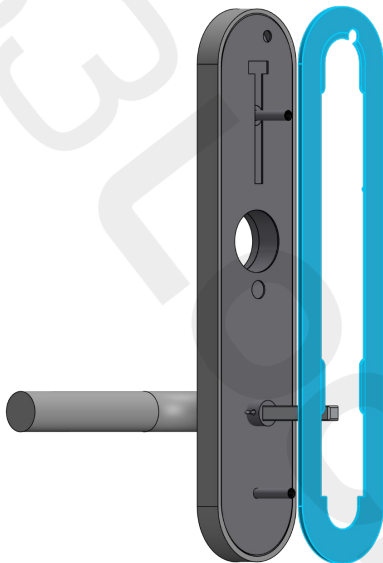
2) Secure using the cotter pin



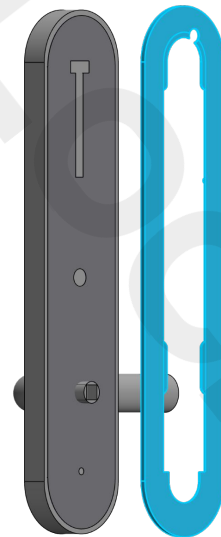
3) Thread the sliding screw into one of the barrel adjusters. Then slide assembly down the T-slot. Gently tighten with a small wrench



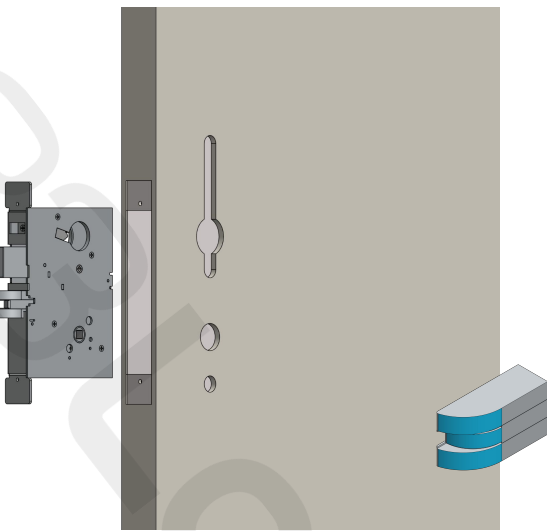
4) Thread the other barrel adjuster on to the bottom post



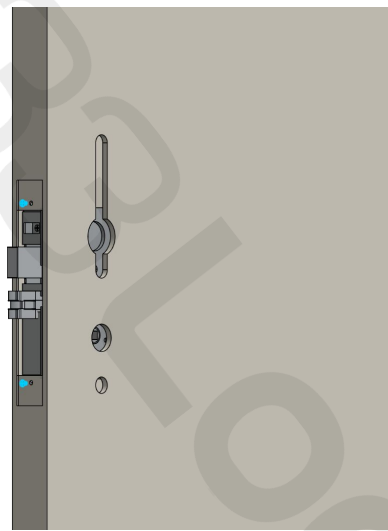
5) Attach the rubber gasket



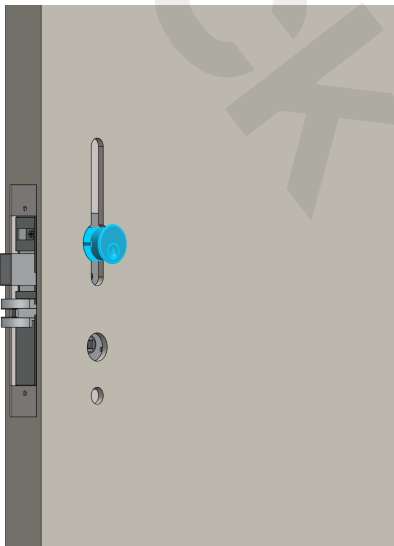
6) Attach the other rubber gasket to the back escutcheon



7) Insert mortise chassis into the door. Make sure the rounded side of the latch is facing toward the front escutcheon



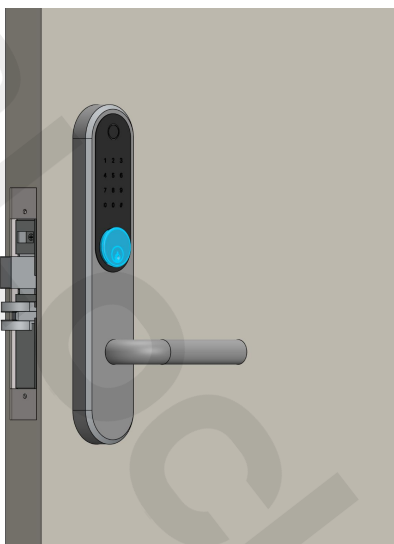
8) Fasten the mortise chassis using two of the provided wood screws



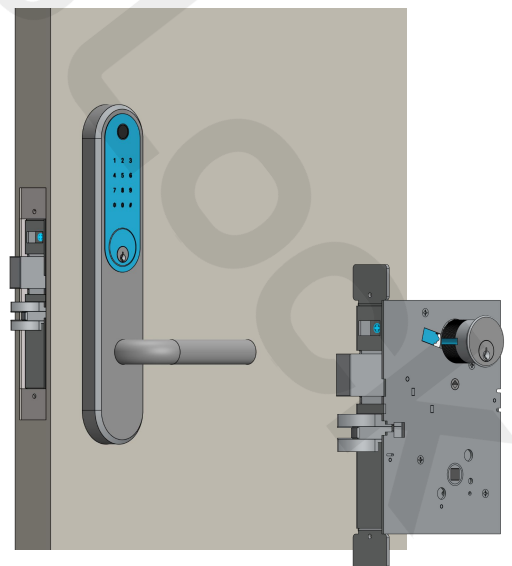
9) Thread the key cylinder into the mortise chassis



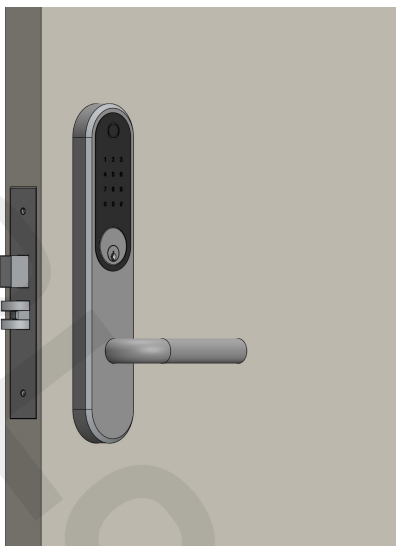
10) Align the arrow so that it is pointing away from the handle



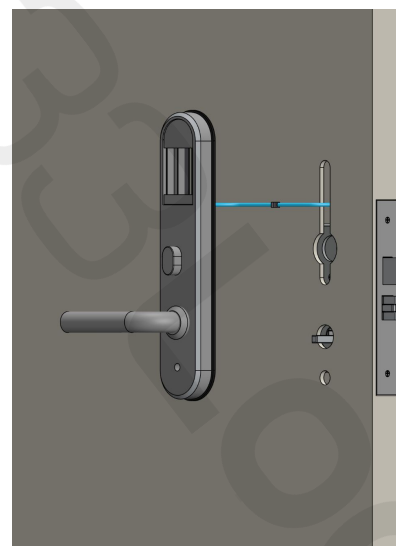
11) Line up the escutcheon and door. Thread key cylinder until flush



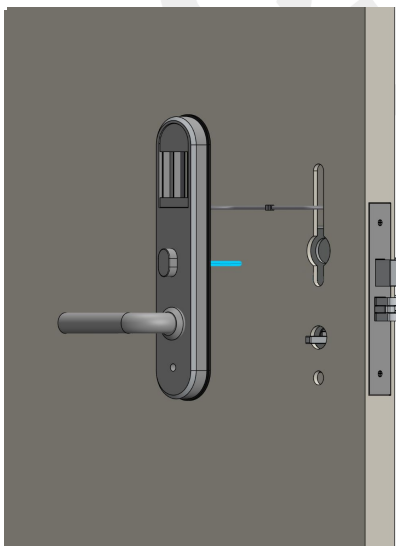
12) Once flush, tighten screw on chassis to lock in the key cylinder



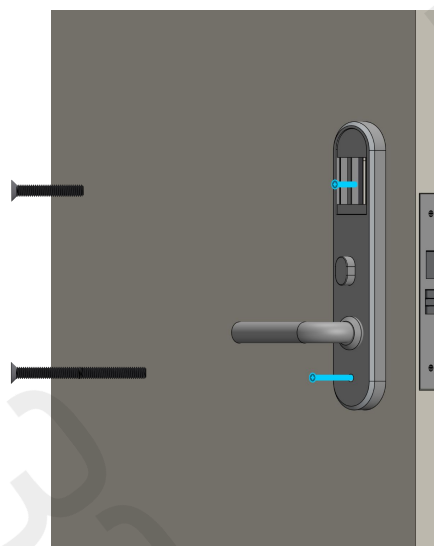
13) Slide the faceplate over the bolt and latch and secure with the small 6mm screws



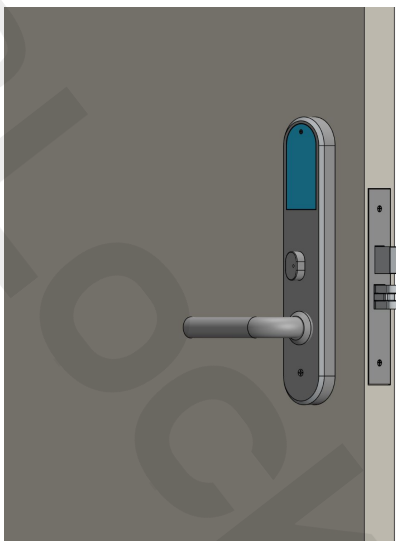
14) Connect the cables of the front and back escutcheons, and stuff excess cable into the door



15) Insert the small spindle into the back of the thumbturn and line up with handle spindle



16) Thread the 30mm screw through the battery case into the other end of the barrel adjuster. Then, thread the 60mm screw through the bottom



17) Replace the battery cover

NOTE: If installed correctly:

1. Turning the thumbturn **will** engage the deadbolt.
2. Inserting a metal key **will** engage the deadbolt.
3. Pulling the back handle **will** open the latch and retract the deadbolt.
4. Pulling the front handle **will not** open the latch or retract the deadbolt without a valid credential.
5. Pulling the front handle **will** open the latch and retract the deadbolt with a valid credential.