

33Lock

IntelliLever 2



Contents



Back Escutcheon



Back Gasket



Front Gasket

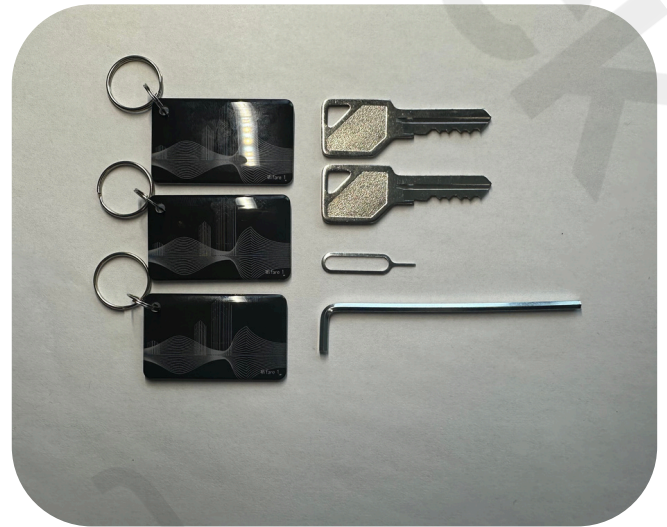


Front Escutcheon



Note that the kit may come with additional parts, but only requires the below:

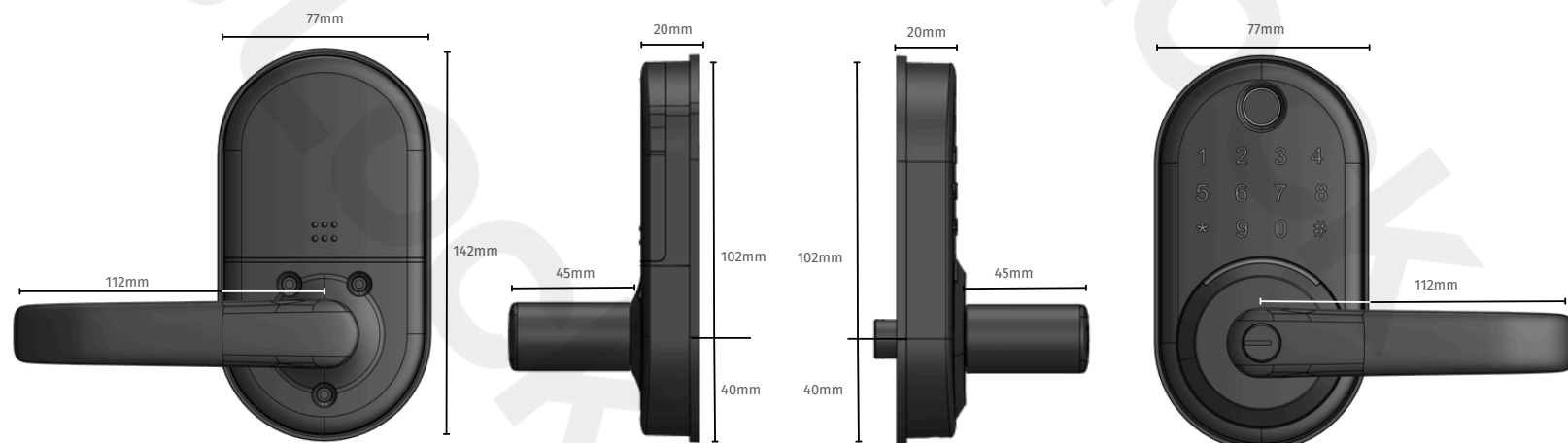
1x adjustable latch, 1x latch plate, 4x 20mm wood screws, 3x 45mm black screws, 2x 35mm positioning columns, 3x 35mm barrel adjusters 1x 75mm spindle, 1x 60mm spindle.



3x mifare tags, 2x metal keys (keyed alike), 1x pin, 1x hex key

Requires 4x AA batteries - Batteries not included

Dimensions



Specifications

Credentials

PIN Code (150), MIFARE 13.56 Mhz (200), Digital Key (300), Fingerprint (200)

WiFi Open, API Open, Mechanical Key

App and Cloud management, iOS, Watch OS, Android

Credentials stored on lock, online and offline operation

Features

Power: 6V 4x AA non-rechargeable alkaline batteries, USB-C backup power

Temperature: -10C to 55C, Humidity: 0% to 95%

Waterproof: IP55, 200 hour salt spray

Finishes: satin black

Interface: touchscreen

Levers: tubular straight, tubular return

Mechanical

Materials: body - aluminum alloy, interface - plastic ABS

Chassis: US tubular latch, field reversible

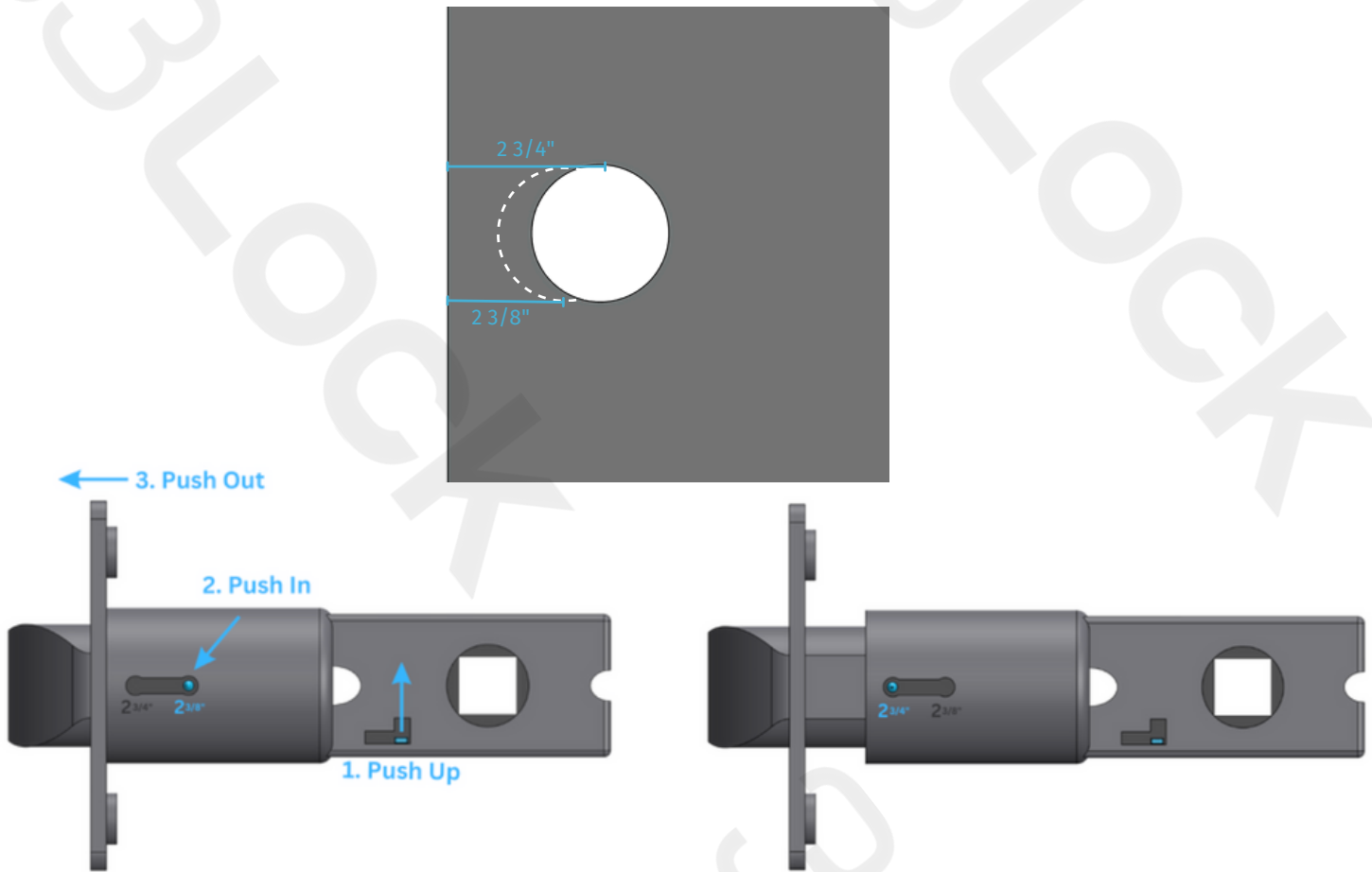
Key cylinder: internal, keyed different

Door thickness: 35mm (1 3/8") to 65mm (2 1/2")

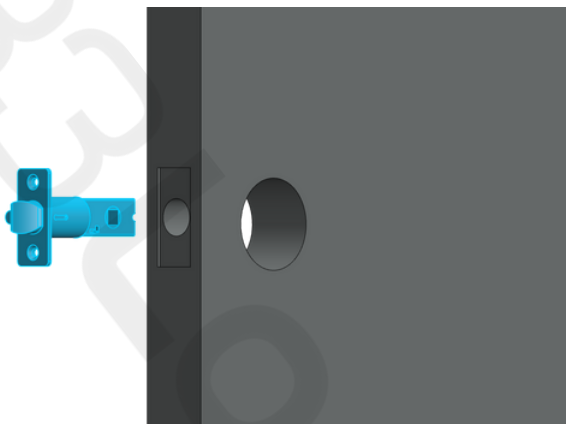
Backset: 60mm (2 3/8") or 70mm (2 3/4")

Adjusting the Backset

The IntelliLever 2 can accommodate either a 70mm (2 $\frac{3}{4}$ ") backset or a 60mm (2 $\frac{3}{8}$ ") backset. Default is 2 $\frac{3}{8}$ " , to change to 2 $\frac{3}{4}$ " follow the steps below.



Inserting the Latch



1) Insert the latch into the side of the door. Make sure the curved part faces the front escutcheon.

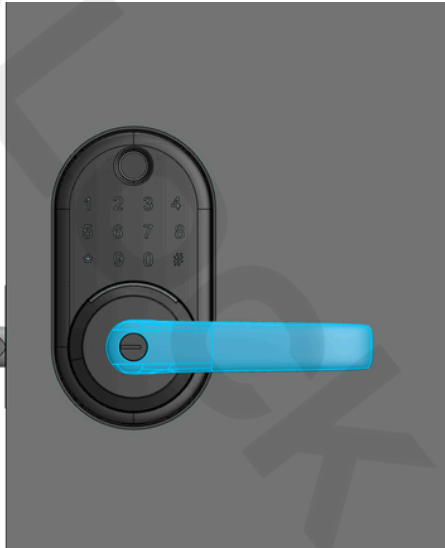


2) Use two 20mm wood screws to secure the latch.

Handing the Lock

Before proceeding, confirm that handles are facing away from the door frame. If they are not, follow the handing instructions below.

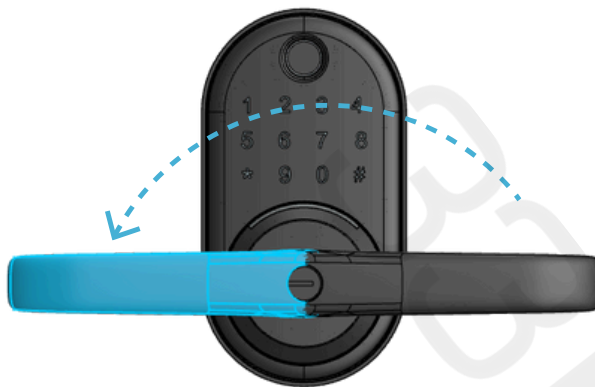
Correct



Incorrect



1) Use the hex key to remove the set screw from the handle

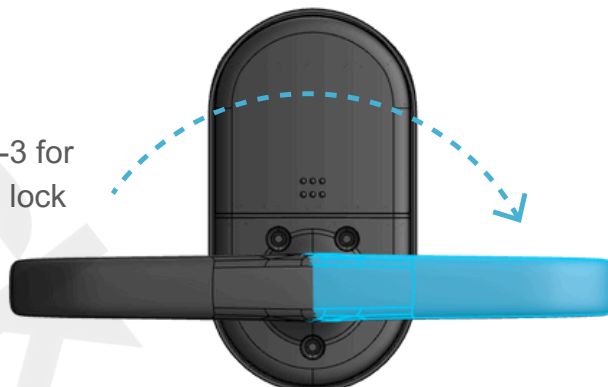


2) Rotate the handle 180 degrees

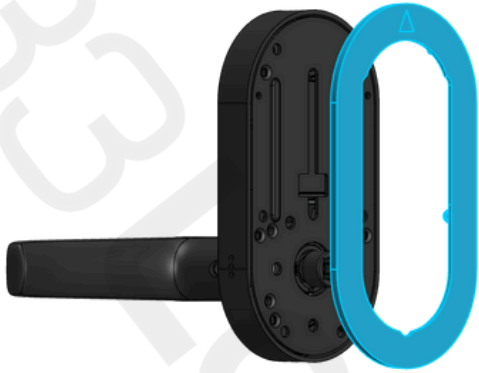


3) Replace the set screw

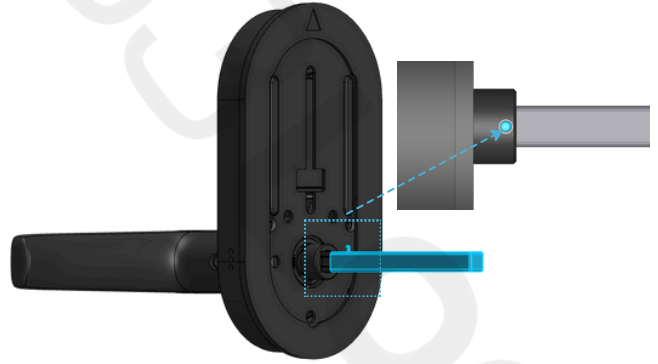
Repeat steps 1-3 for the back of the lock



Assembling the Lock

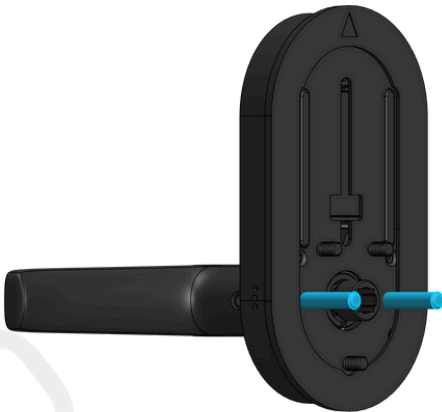


1) Press the rubber gasket into place on the front escutcheon, ensure the arrow is facing “up”.



2) Insert the spindle into the front escutcheon, ensure it is locked in place.

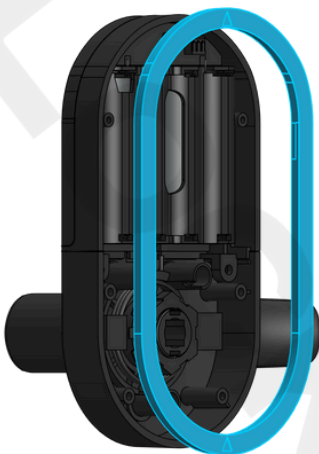
- For doors $>1.5''$ thick, insert the 75mm spindle
- For doors $<1.5''$ thick, insert the 60mm spindle



3) Thread the 2x positioning columns onto the the two outer screw posts on the front escutcheon, ensure they are tight.

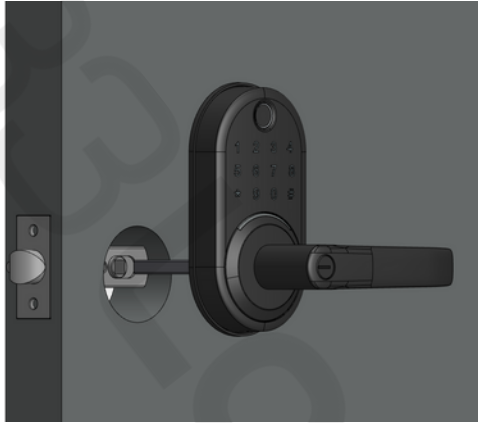


4) Thread the 3x barrel adjusters onto the other three screw posts on the front escutcheon, ensure they are tight.

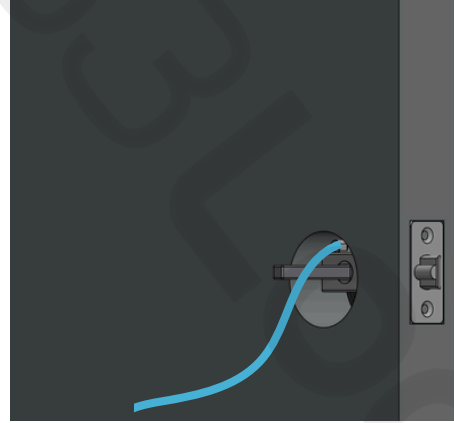


5) Press the rubber gasket into place on the back escutcheon, ensure the arrow is facing “up”.

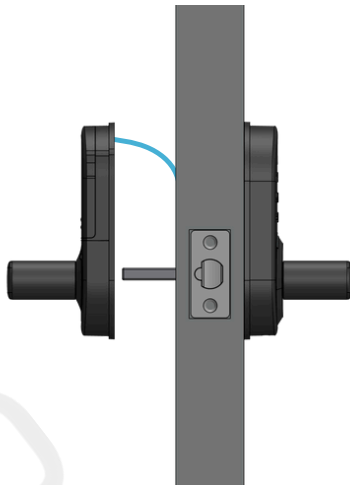
Installing the Lock



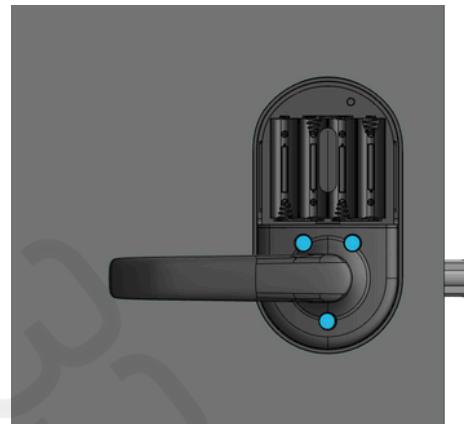
1) Install the front escutcheon by inserting the spindle and alignment columns through the holes in the latch. Note if they do not line up, adjust the backset of the latch.



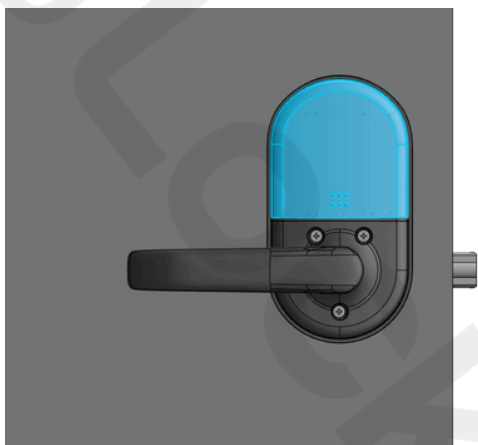
2) Feed the cable from the front escutcheon through the bore hole in the door.



3) Attach the cable to the back escutcheon and then press up to the door.



4) Insert the 3x 45mm black screws to secure the back escutcheon to the back plate.



5) Insert 4x AA batteries and then slide on the battery cover. Note, batteries are not included.